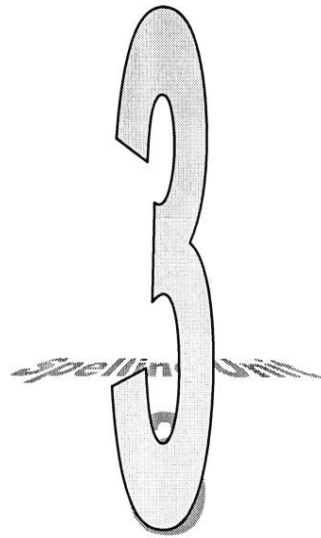


Name: _____

Spelling Unit



3

A. Pretest and Proofreading

B. Spelling Words and Phrases

1. vice no bad habit or vice
2. tile a loose tile in the floor
3. spite in spite of the weather
4. mining mining for gold
5. idle don't like to be idle
6. diet now on a diet
7. diamond sparkled like a diamond
8. finally finally packed
9. trial giving it a trial
10. quietly to talk quietly
11. reliable a reliable friend
12. infant fed the infant
13. instant started at the same instant
14. distant the distant mountain
15. linen made with linen
16. sicken to sicken with fear
17. nickel not much for a nickel
18. pickle a very crisp pickle
19. tickled tickled my nose
20. sprinkle a light sprinkle of rain

C. Challenge Words and Phrases

1. distrust to show no distrust
2. drifting drifting out of reach
3. prism shaped like a prism
4. resign refused to resign
5. violence without violence

Other Word Forms

vices, vicious
tiles, tiled, tiling
spited, spiting, spiteful
mine, miner
idled, idling, idly
dieted, dieting, dieter
diamonds
final, finals
trials
quiet
rely
infants, infancy
instantly
distantly, distance
linens
sick, sickens, sickening,
sickly
nickels
pickles, pickled, pickling
tickle, tickling, ticklish
sprinkles, sprinkled,
sprinkling

D. Rhyming Words

Write the words from the spelling list that rhyme with each of the words.

- | | | | |
|---------------|-------|--------------|-------|
| 1. chicken | _____ | 7. sickle | _____ |
| 2. dining | _____ | | _____ |
| 3. quiet | _____ | 8. crinkle | _____ |
| 4. dial | _____ | 9. quite | _____ |
| | _____ | 10. bridal | _____ |
| 5. undeniable | _____ | 11. trickled | _____ |
| 6. spice | _____ | | |

12. Write the three words not used above that rhyme with each other.

- a. _____ b. _____ c. _____

13. Write the four words that did not rhyme with any of the words above.

- a. _____ c. _____
b. _____ d. _____

E. **Missing Vowels** Find the missing vowels and write the spelling words.

- | | | | |
|--------------------|-------|--------------------------|-------|
| 1. m _ _ n _ _ ng | _____ | 7. d _ _ _ m _ _ nd | _____ |
| 2. _ _ nf _ _ nt | _____ | 8. q _ _ _ _ tly | _____ |
| 3. l _ _ n _ _ n | _____ | 9. d _ _ st _ _ nt | _____ |
| 4. p _ _ ckl _ _ | _____ | 10. t _ _ ckl _ _ d | _____ |
| 5. spr _ _ nkl _ _ | _____ | 11. r _ _ l _ _ _ bl _ _ | _____ |
| 6. f _ _ n _ _ lly | _____ | 12. s _ _ ck _ _ n | _____ |

F. **Be a Word Detective** Remove one letter from each word in parentheses to find a word from the spelling list. Write the word.

- The audience loved them in _____ (sprite) of their poor performance.
- A bad habit can be a _____ (voice).
- The feather _____ (trickled) my nose.
- A _____ (prickle) is made from a cucumber.

Spelling Words

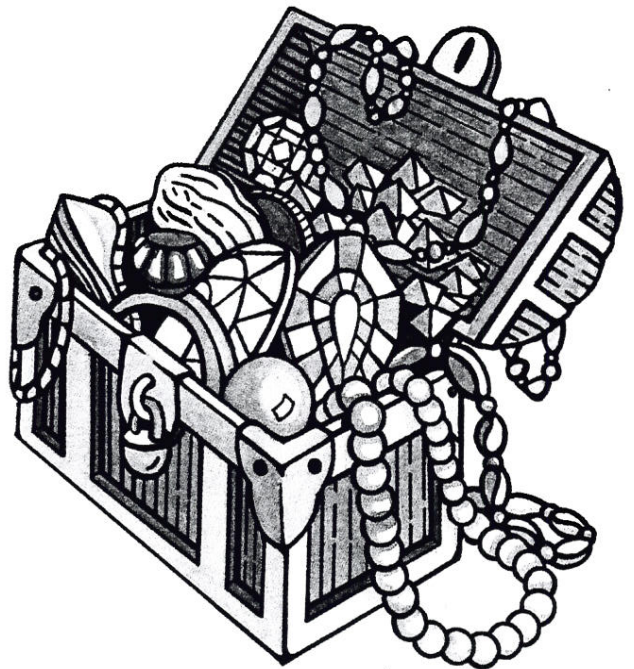
<i>vice</i>	<i>tile</i>	<i>spite</i>	<i>mining</i>	<i>idle</i>	<i>diet</i>
<i>diamond</i>	<i>finally</i>	<i>trial</i>	<i>quietly</i>	<i>reliable</i>	<i>infant</i>
<i>instant</i>	<i>distant</i>	<i>linen</i>	<i>sicken</i>	<i>nickel</i>	<i>pickle</i>
<i>tickled</i>	<i>sprinkle</i>				

G. Finding Words The words in the spelling list appear in the beginning (A-H), middle (I-Q), or end (R-Z) of the **Spelling Dictionary**. Write each word.

Beginning A-H	Middle I-Q	End R-Z
1. _____	5. _____	13. _____
2. _____	6. _____	14. _____
3. _____	7. _____	15. _____
4. _____	8. _____	16. _____
	9. _____	17. _____
	10. _____	18. _____
	11. _____	19. _____
	12. _____	20. _____

H. Generally Speaking Write a spelling word for the group it best fits.

- steady, dependable, _____
- penny, dime, _____
- shower, water, _____
- baby, child, _____
- far, not close, _____
- moment, second, _____
- precious stone, gem, _____
- silently, softly, _____
- at last, at an end, _____
- upset, make ill, _____
- thin square, plastic piece, _____



I. Using Other Word Forms Add an ending to each word to write an Other Word Form (p. 12)

1. tickle + ish = _____
2. spite + ing = _____
3. idle + ing = _____
4. sprinkle + ed = _____
5. infant + cy = _____
6. What letter gets subtracted in the first four words? _____

J. Challenge Words Write the Challenge Word that completes each analogy.

distrust	drifting	prism	resign	violence
----------	----------	-------	--------	----------

1. color is to red as shape is to _____
2. land is to wandering as sea is to _____
3. faith is to confidence as doubt is to _____
4. enter is to enlist as leave is to _____
5. calm is to serenity as fury is to _____

K. Spelling and Writing Write each set of words in a sentence. You may use Other Word Forms. Proofread your work.

Example: idle – reliable – spite—*In spite of his idle behavior, he is a reliable worker.*

1. vice – spite – idle
2. mining – distant – diamond
3. sicken – diet – pickle
4. tile – sprinkle – instant
5. reliable – trial – nickel
6. infant – finally – quietly
7. linen – tickled – prism
8. violence – resign – sickening
9. drifting – distrust – idly

