

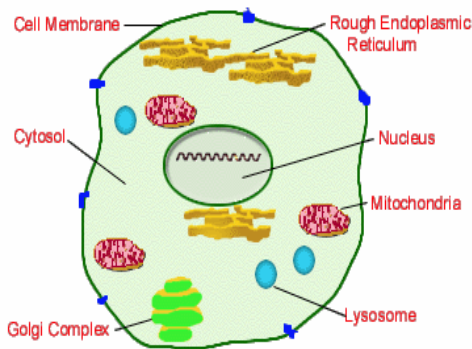
Name: _____

Due October 27th 2006

Create a Cell in the Kitchen: Extra Credit

This project is intended to assist with student understanding of a cell and its components. Take a small glass jar (round for an animal or rectangular for a plant) fill partially with a Jell-O mix of light color. Next you will need to add a nucleus (student have used apricots for this with the center up). Then you will need to add more components to represent the other major cell parts we discussed on chapter 2. A second sample is to use a few sprinkles inside the center of the nucleus to represent the chromosomes. Then you will need to write a brief write up to describe what you used to represent each part and what the function is.

Cell membrane or Cell Wall	10
Nucleus	10
Vacuole	10
Cytoplasm (the Jell-O)	10
Mitochondria	10
Chromosomes	10
Your descriptive write up on your representation of the cell parts and the functions of them.	40
Total	100



I have understood the project requirements. Mr. Young explained the high expectations for this and all assignments I will receive this year and will do my best to fulfill these requirements. I was given the opportunity to ask questions and understand that I may ask questions throughout this project if at any time I am off track. I will go home and notify my parents that I have a project to complete and will schedule appropriate times to work on this so that I am not rushing to finish the night before the due date. I will also complete this assignment on my own and turn in with a good feeling that I did this on my own to the best of my abilities.

Student Signature: _____